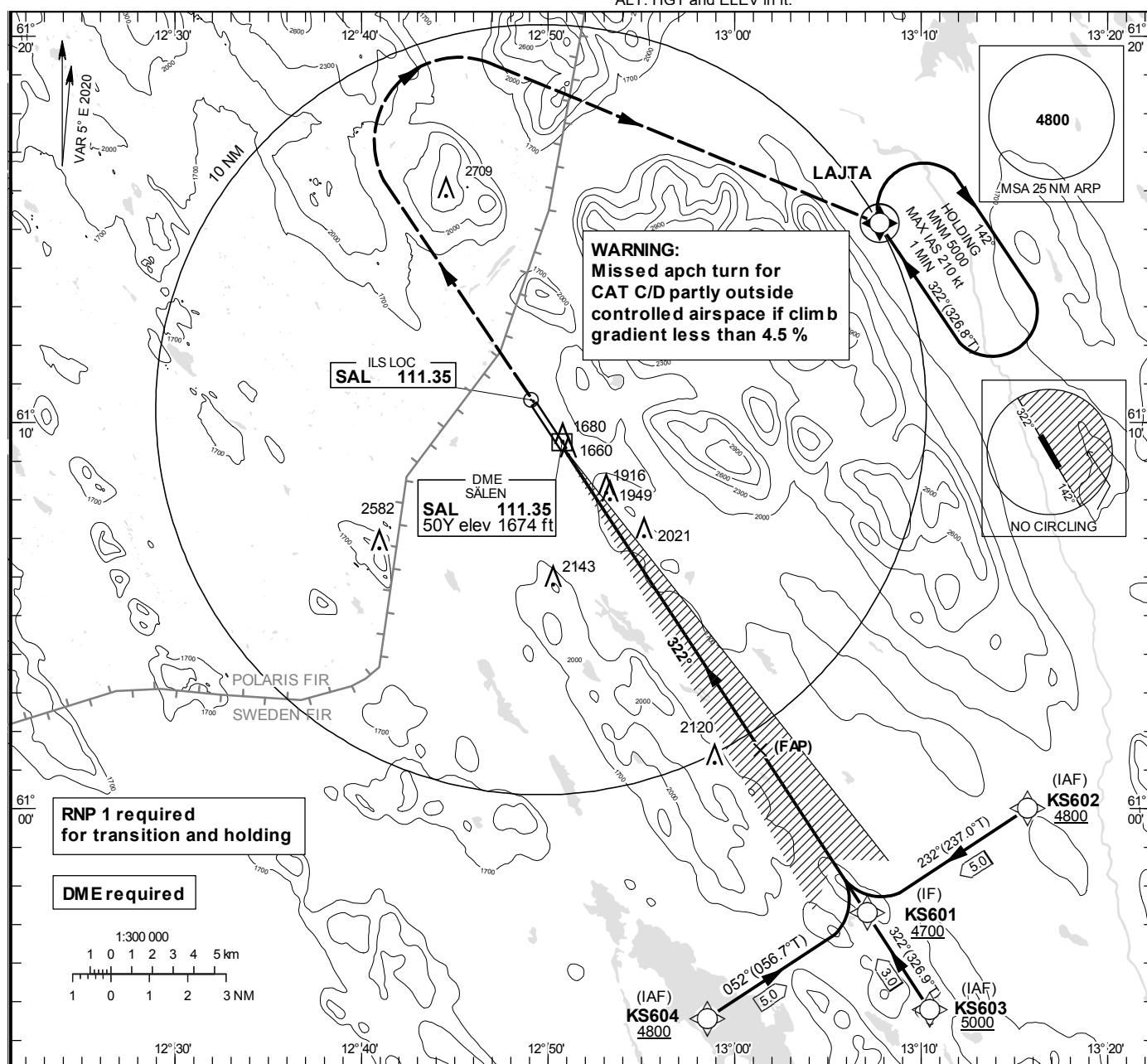


ILS or LOC RWY 33

SÄLEN TOWER	124.460
-------------	---------

OCH are related to THR.
 Circling OCH are related to AD ELEV.
 BRG are MAG
 ALT, HGT and ELEV in ft.

INSTRUMENT APPROACH CHART – ICAO



TA 6000 ft AMSL

RDH 50.5 ft

*Timing not authorized for defining the MAPt

MM replaced by SAL DME 0.8
OM replaced by SAL DME 4.0

CLIMB STRAIGHT AHEAD TO 5200,
TURN RIGHT (MAX IAS 210 kt)
TO LAJTA AND JOIN HOLDING

DME
SAI

292

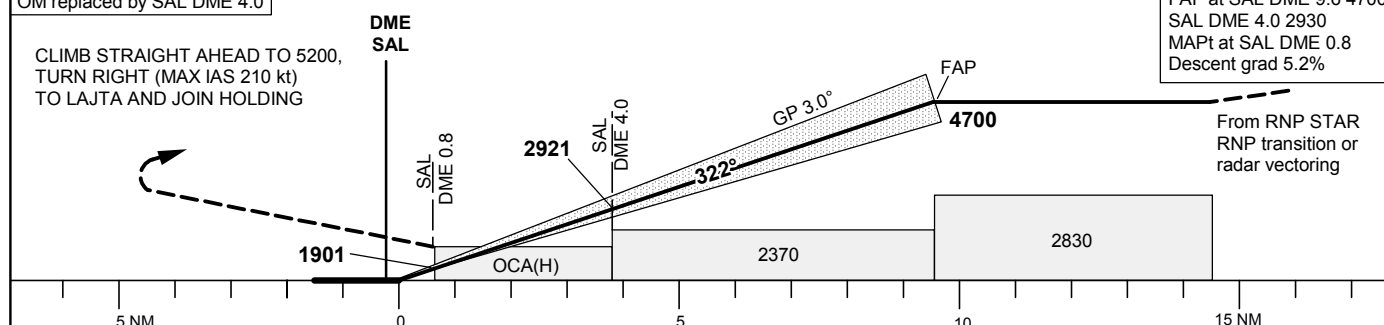
$$\frac{SAI}{ME}$$

FAP

4700

LOC
FAF at SAL DME 9.6 4700
SAL DME 4.0 2930
MAPt at SAL DME 0.8
Descent grad 5.2%

From RNP STAR
RNP transition or
radar vectoring



5 NM		0				5		10		15 NM				
OCA (H)		A	B	C	D	Final approach	LOC Distance FAF-MAPT 8.8 NM*							
Cat of ACFT						DME SAL NM	2	3	4	5	6	7	8	9
Straight in Approach	CAT I	1810(167)	1820(177)	1830(187)	1840(197)	ALT	2280	2600	2920	3240	3560	3880	4190	4510
	CAT II (2.5% ¹)	1722(79)	1739(96)	1751(108)	1765(122)	GS	kt	80	100	120	140	160	180	
	CAT II (3.0% ¹)	1694(51)	1705(62)	1719(76)	1734(91)	Time	min:s	6:35	5:16	4:23	3:46	3:18	2:56	
	LOC	2270(630)				Rate of descent	ft/min	425	530	635	745	850	955	
	CAT III B approved (3.0% ¹)													
Circling SW RWY		2260(620)	2260(620)	2540(900)	2980(1340)	(1)MNM MISSED APCH climb grad								

CHANGE: Editorial